

# RFFlow 5

## Professional Flowcharting

RFFlow is a graphics program that lets you easily draw flowcharts, organization charts, and many other kinds of diagrams. Quickly create professional-looking charts for documents, presentations, or the Web. See samples charts and get more information about RFFlow at [www.rff.com](http://www.rff.com).

### Drawing shapes and lines

- Access shapes and lines easily in stencils
- Move, duplicate, edit, and delete individual shapes or groups of shapes
- Right-click to change properties: color, style, size, rotation, and number
- Connect shapes with straight or curved lines, or have RFFlow connect them automatically
- Choose from a variety of arrows
- Draw very large charts with thousands of shapes
- Create custom shapes
- Objects snap to the grid for easy alignment
- Lines rubber band as you move shapes

### Adding text

- Enter and edit text with word processor features: multiple fonts and sizes, bold, italic, underline, color, tabs, alignment, spelling, subscripts and superscripts, special characters, undo and redo, cut, copy, and paste
- Shapes automatically size around your text

### Using RFFlow with other applications

- Embed and link charts to documents in other programs
- Save charts as HTML to create Web pages
- Save charts as gif, jpeg, bmp, emf, wmf, and others
- Insert clip art and pictures
- Add hyperlinks to shapes
- RFFlow is compatible with Microsoft Office and WordPerfect Office

### Intuitive features

- Automatically fit the chart to a page
- Check spelling
- Find and replace text
- Automatic alignment, spacing, and centering
- Page headers and footers
- Layers for industrial drawings
- Stacking order for front/back positioning
- Zoom
- Auto scrolling
- Grid points, grid lines, ruler, and guidelines
- Multi-level undo and redo

### Help, documentation, and support

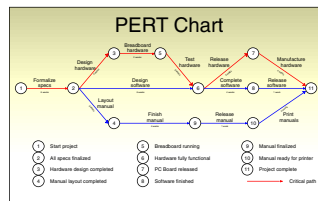
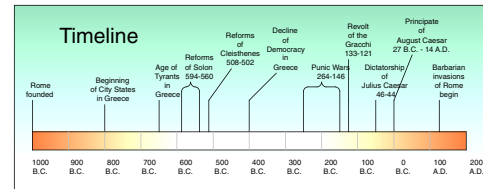
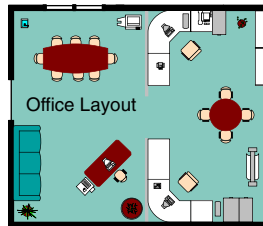
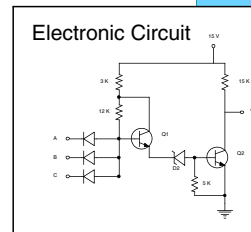
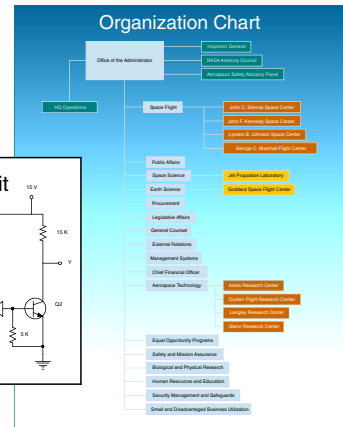
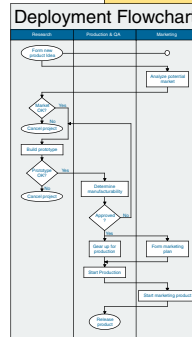
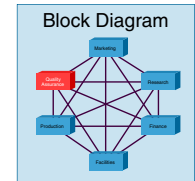
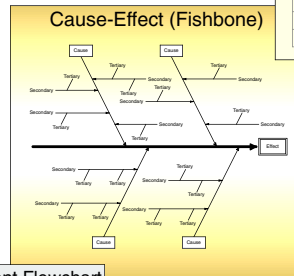
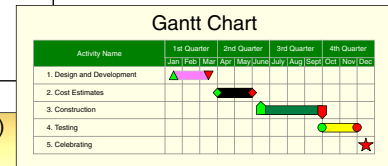
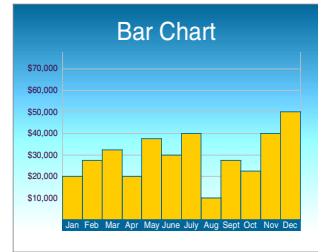
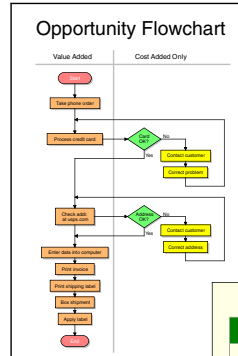
- In-program Help
- User's Guide and Quick Reference card
- Free and unlimited technical support

### System requirements

- Requires Microsoft Windows 95, 98, Me, NT 4.0, 2000, XP, or later
- Install or run RFFlow on individual computers or over a network
- RFFlow is licensed according to the number of concurrent users
- CD-ROM media enclosed

## RFF Electronics

PO Box 1244 • Loveland CO 80539-1244 USA  
 Phone 970 663 5767 • Fax 970 669 4889  
[www.rff.com](http://www.rff.com) • [flow@rff.com](mailto:flow@rff.com)



© 1989-2004  
 RFF Electronics  
 All rights reserved.  
 Product 360-5

